

Over the past year, United Way Halton & Hamilton helped more than

# 200,000

people overcome obstacles and find hope for the future.



**United Way**  
Halton & Hamilton

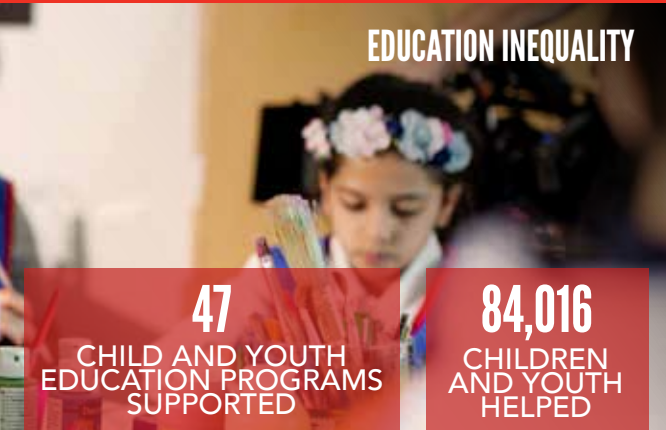


**United Way**  
Halton & Hamilton

We love where we live, but issues like hunger, education inequality and mental illness are hurting our communities. By showing your local love, you can change that.

You can make local issues #UNIGNORABLE.

## EDUCATION INEQUALITY



### 47

CHILD AND YOUTH EDUCATION PROGRAMS SUPPORTED

### 84,016

CHILDREN AND YOUTH HELPED

## IMPROVING LIVES LOCALLY

focused on impact.

SPONSORED BY



Thank you to the Sprott Foundation for doubling the impact of new and increased Leadership level donations.

To show your local love visit [uwhh.ca](http://uwhh.ca)

@UnitedWayHH



BN 10746 2988 RR0001



Burlington | Halton Hills | Hamilton | Milton | Oakville



## SHOW YOUR LOCAL LOVE

Burlington | Halton Hills | Hamilton | Milton | Oakville



### 1 IN 4

CHILDREN ARE NOT SCHOOL READY PRIOR TO GRADE 1



## MENTAL ILLNESS

### 50

COUNSELLING AND MENTAL HEALTH PROGRAMS SUPPORTED

### 56,415

PEOPLE HELPED



### 50%

OF CANADIANS WILL HAVE A MENTAL ILLNESS BY AGE 40



## HUNGER

### 10

FOOD SECURITY PROGRAMS SUPPORTED

### 48,716

PEOPLE HELPED



### 11%

OF ONTARIO HOUSEHOLDS ARE FOOD INSECURE





When I was eight, we moved to Canada because my parents thought we could have a better life here. I was excited about meeting other people, but I was scared of going to school because I was shy. I was afraid nobody would want to play with me or be my friend because I didn't speak English.

Our neighbour told my mom about a United Way after-school program where I could get help with homework and do activities. The new people I meet are really nice, like my friend Sam. I love her because she's kind. We have a lot of fun together, and now I feel less shy.

I feel more comfortable in Canada now. I can speak English, and I'm more confident. I even got to be part of a student art exhibition at the art gallery in my city.

- Nuhaa age 10

## SHOW YOUR LOCAL LOVE. DONATE TODAY.



**\$5/MONTH** \$60/YEAR  
PROVIDES 2 INDIVIDUALS AN  
ENGAGING COMMUNITY OUTING



**\$31/MONTH** \$372/YEAR  
CAN PROVIDE 73 HOMELESS INDIVIDUALS  
WITH A BREAKFAST & HOT LUNCH



**\$100/MONTH** \$1200/YEAR  
LEADERSHIP DONATION  
MATCHES 25 AT-RISK CHILDREN WITH  
YOUTH MENTORS FOR A GROUP  
OUTING EVERY MONTH